



# **Softwareverteilung in der paedML Novell 4.x**

- 1. VM mit AdminStudio vorbereiten**
- 2. Arbeiten mit dem AdminStudio**

**Autoren:  
Kluge  
Stand: Juli 2016**

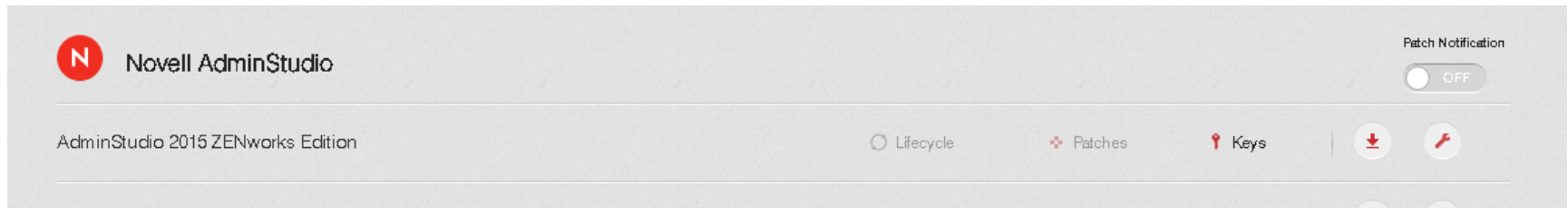


## 1. VM mit AdminStudio vorbereiten

Novell.

paedML® 4.x

- Im Supportportal von Novell bekommt man die Software und Lizenz kostenlos.
- Anmelden mit seinem Schulaccount
- Unter Software AdminStudio Software und Key herunterladen.



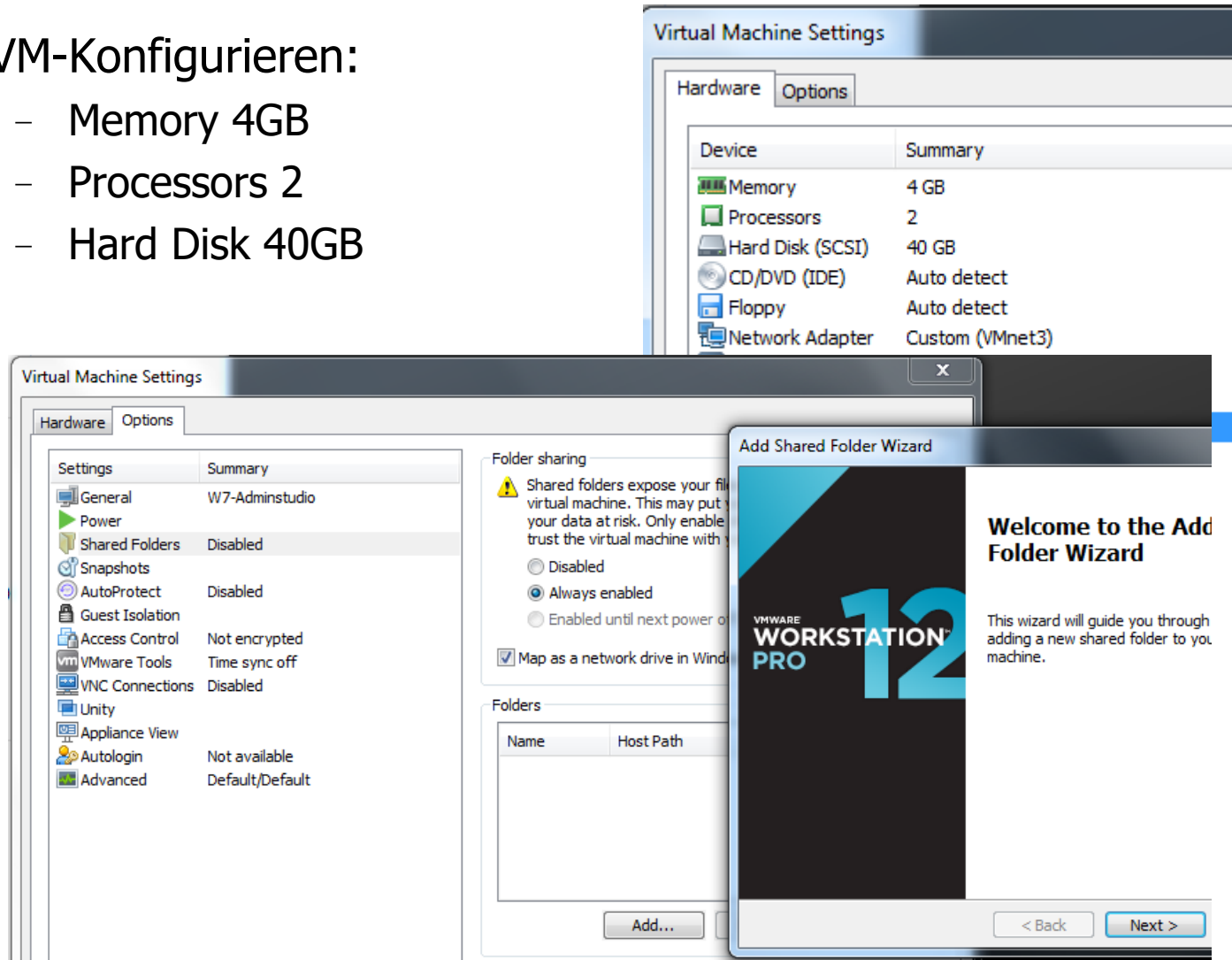


# 1. VM mit AdminStudio vorbereiten

Novell.

paedML® 4.x

- VM-Konfigurieren:
  - Memory 4GB
  - Processors 2
  - Hard Disk 40GB

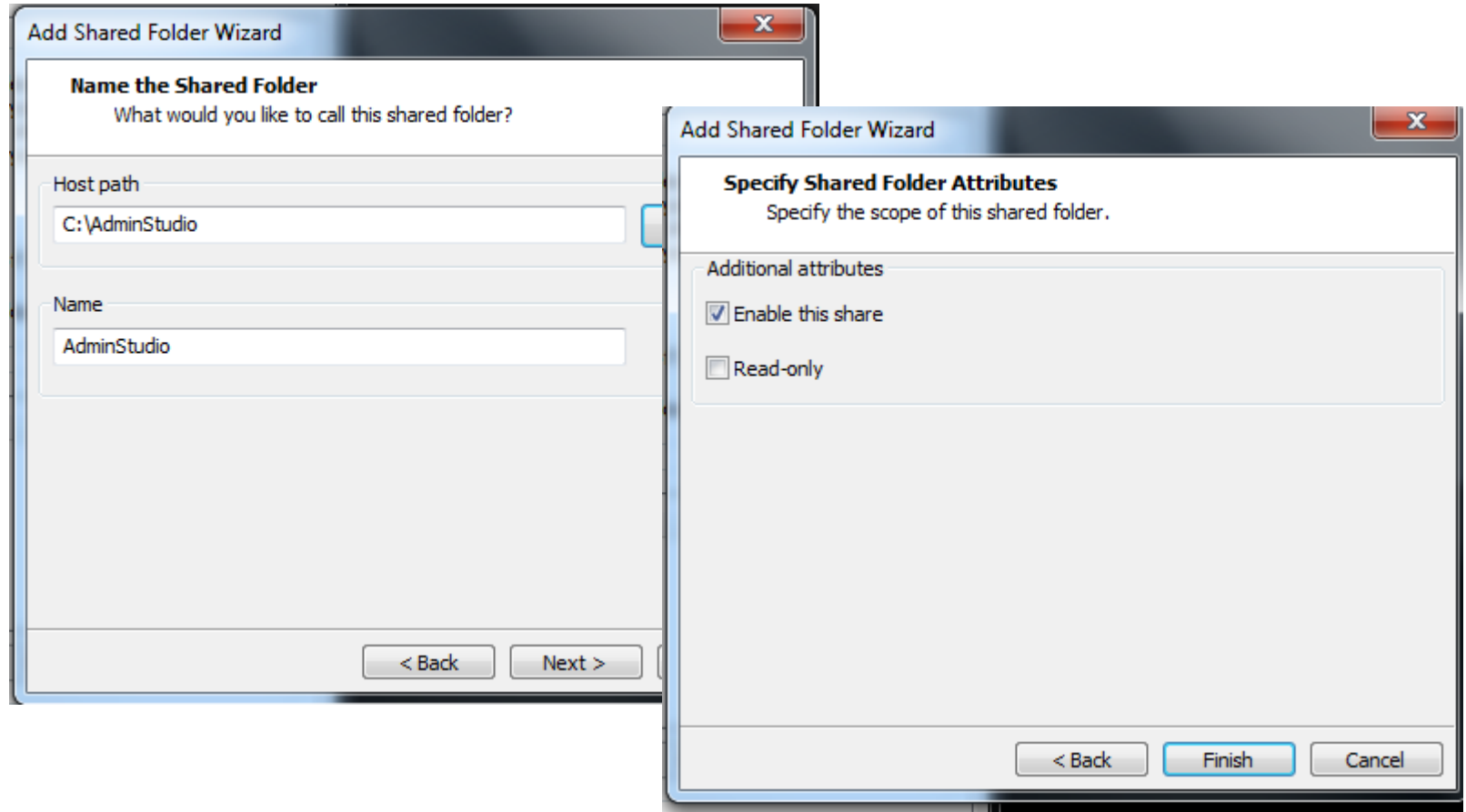




# 1. VM mit AdminStudio vorbereiten

Novell.

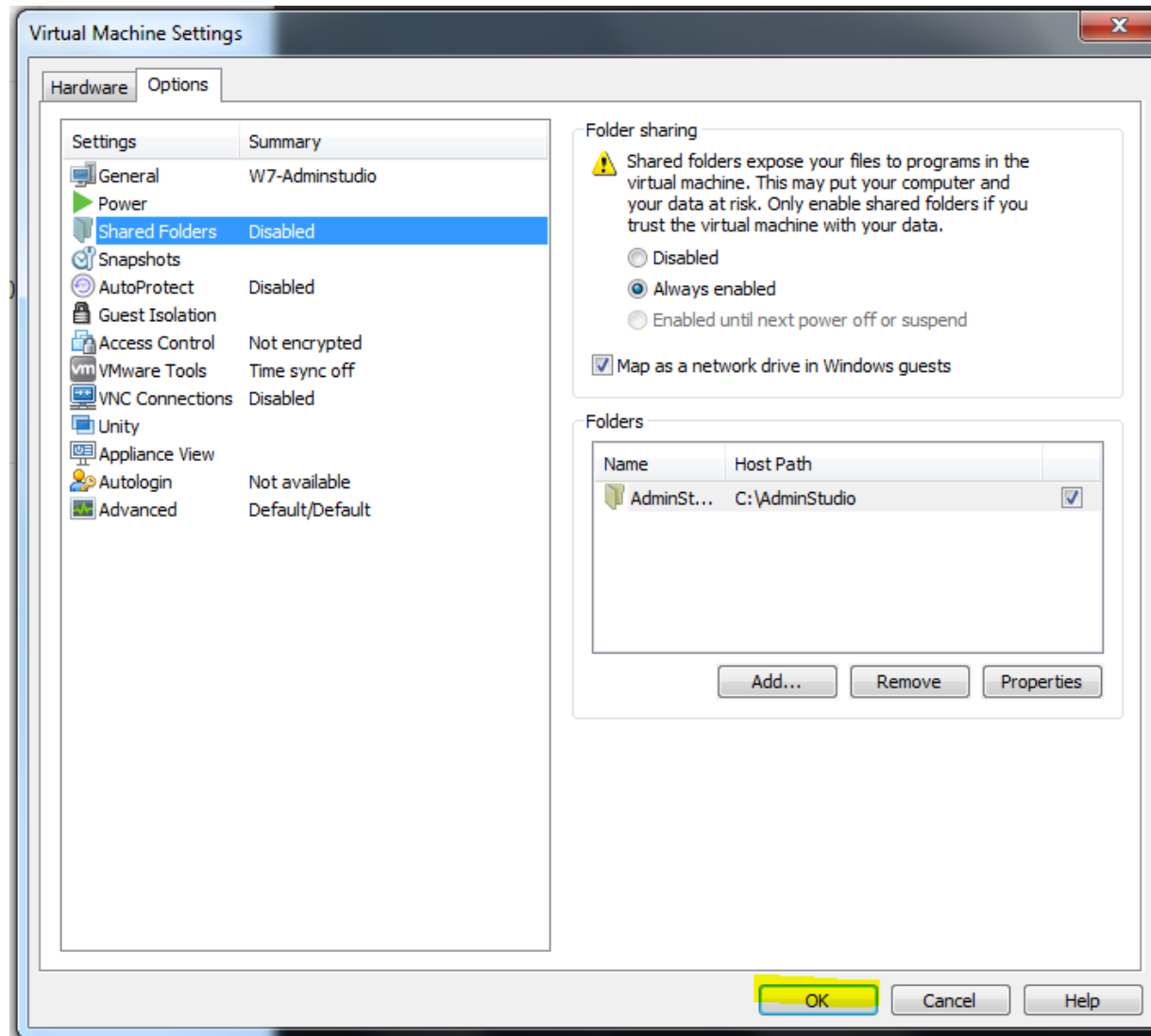
paedML® 4.x





# 1. VM mit AdminStudio vorbereiten

Novell.  
paedML® 4.x



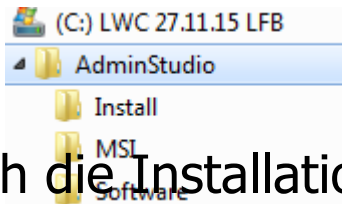


## 1. VM mit AdminStudio vorbereiten

Novell.

paedML® 4.x

Netzlaufwerk einbinden mit folgender Dateistruktur:  
Hier in der LFB Umgebung auf C:



Danach die Installationsdateien von AdminStudio in den Ordner Install Kopieren.

Ordner MSI enthält dann die fertigen MSI-Dateien

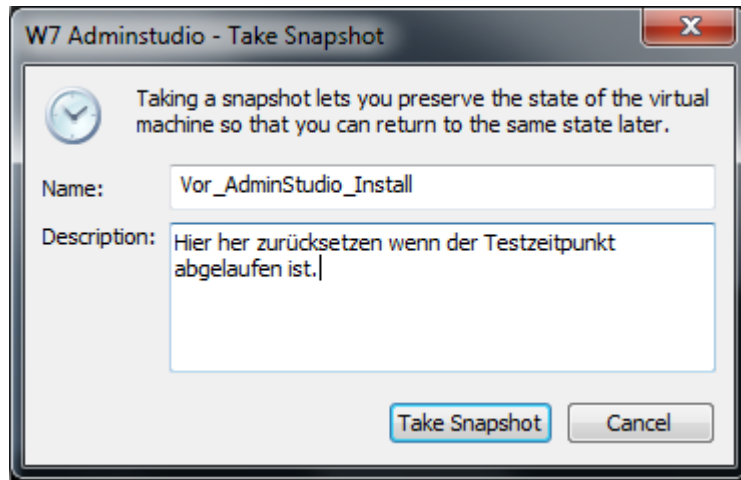
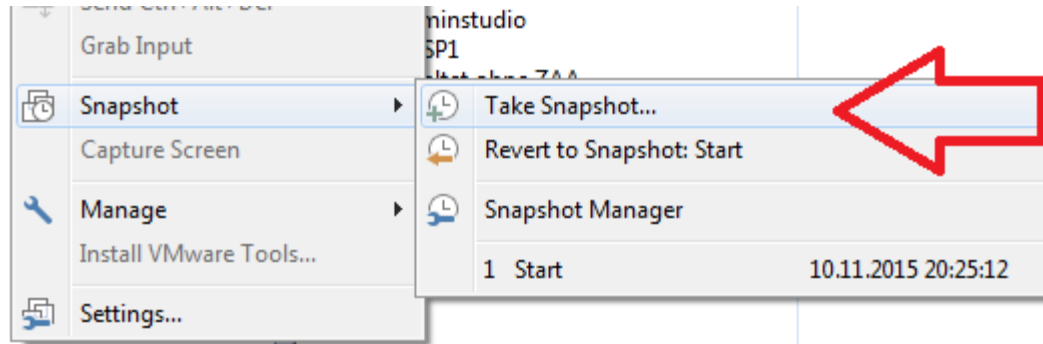
Ordner Software enthält die Software-Ordner die paketierte werden sollen.





# 1. VM mit AdminStudio vorbereiten

Novell.  
paedML® 4.x



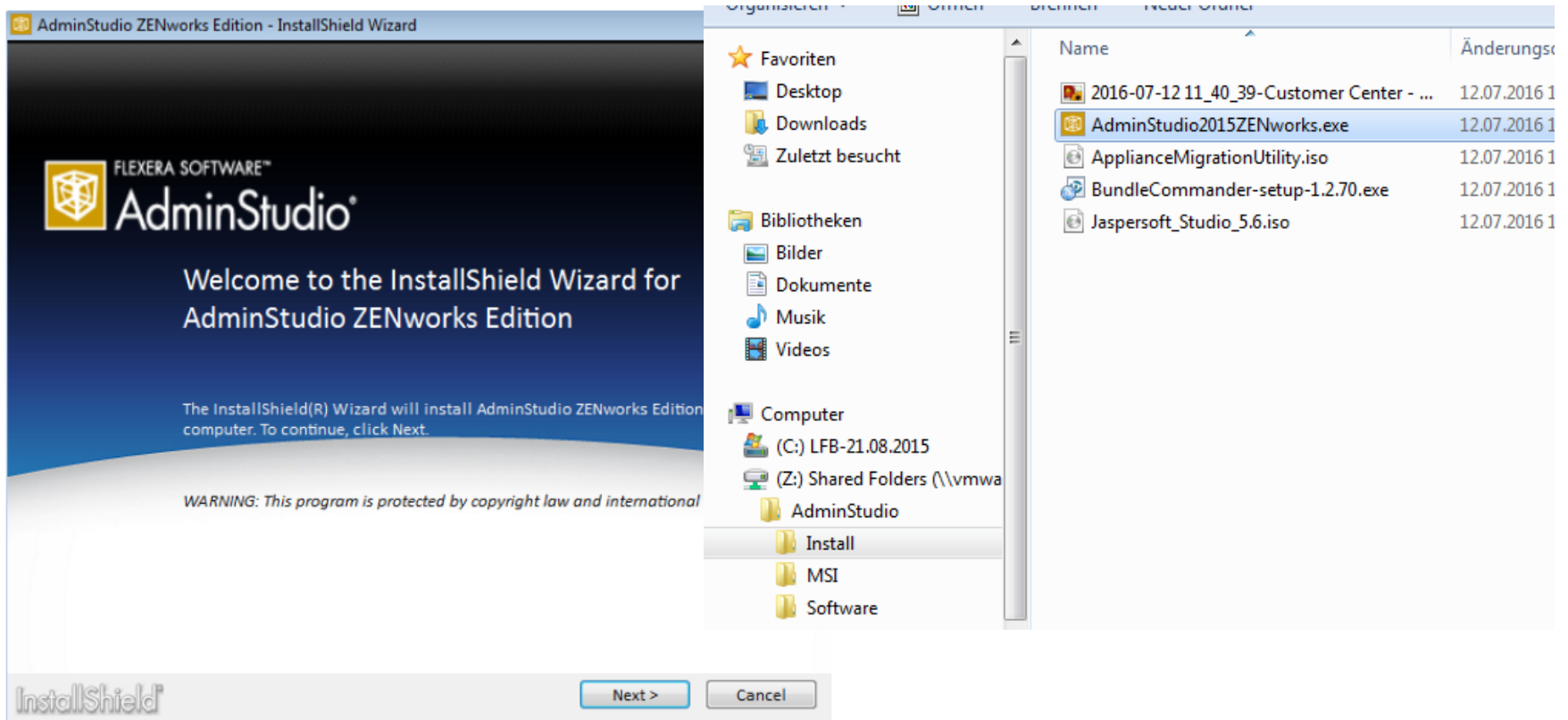


## 1. VM mit AdminStudio vorbereiten

Novell.

paedML® 4.x

VM-Starten, mit Adam lokal anmelden und Installation des AdminStudio unter Z:\ starten.





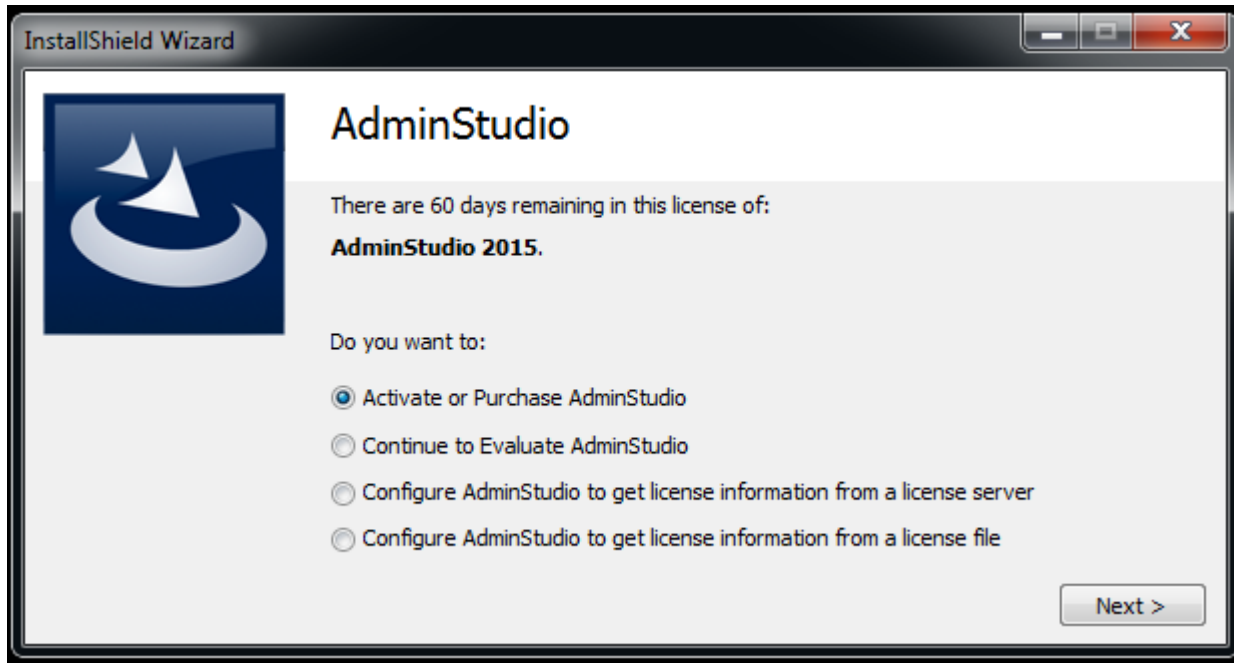


## 1. VM mit AdminStudio vorbereiten

Novell.

paedML® 4.x

Nach der Installation kann man das AdminStudio mit der eigenen Lizenz vom Novell-Portal aktivieren.

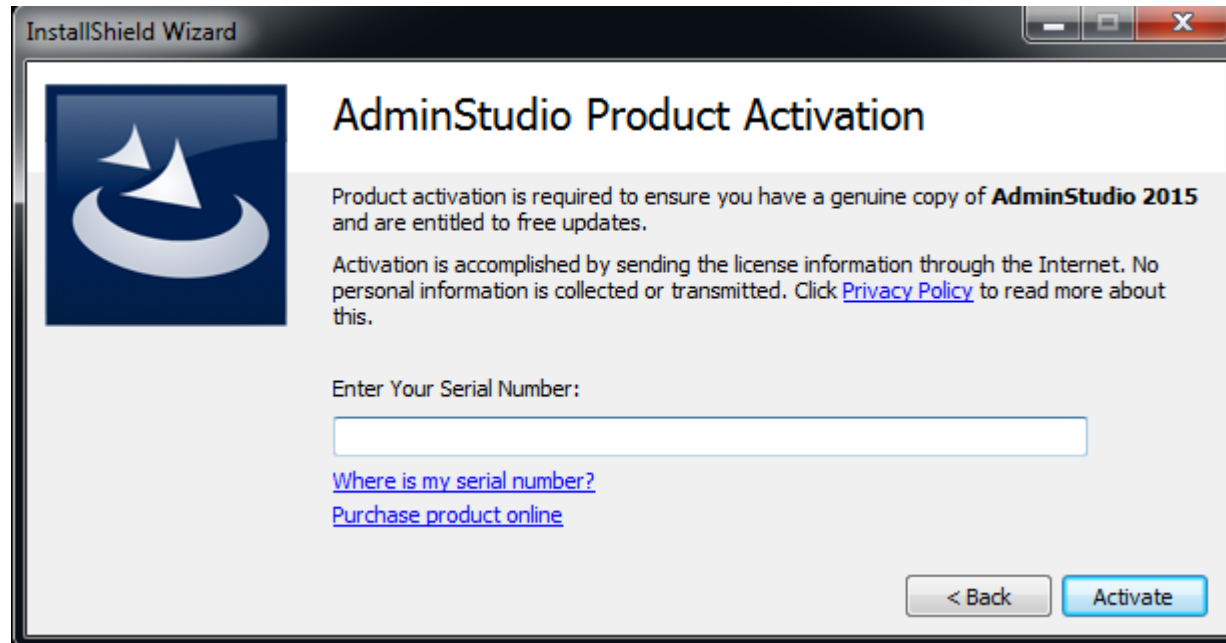




## 1. VM mit AdminStudio vorbereiten

Novell.

paedML® 4.x



Lizenz eingeben.





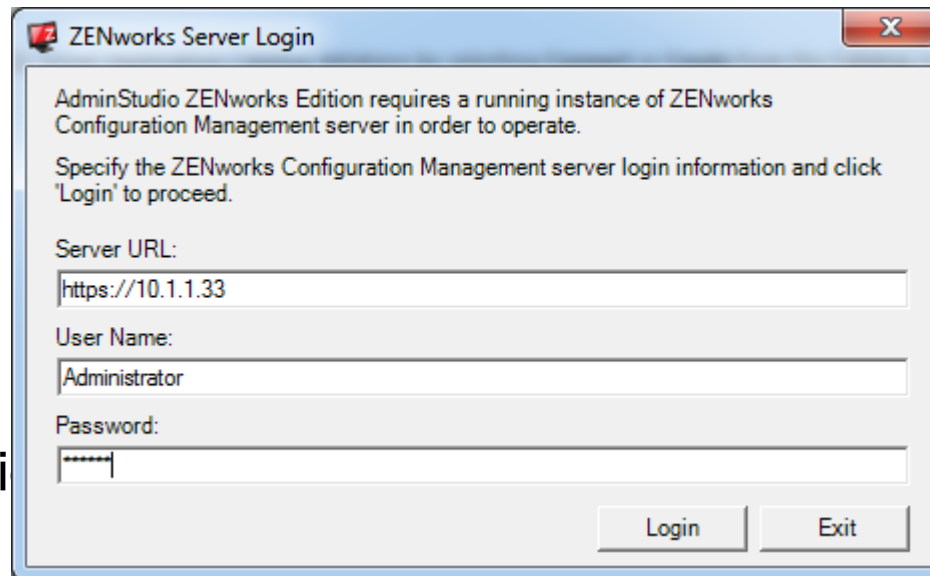
## 1. VM mit AdminStudio vorbereiten

Novell.

paedML® 4.x

Mit dem ZCM-Server verbinden. Der „User Name“ muss ein Administrator Account am ZCM-Server sein.

Ferti



The image shows a Windows-style dialog box titled "ZENworks Server Login". It contains the following text and fields:

- Text: "AdminStudio ZENworks Edition requires a running instance of ZENworks Configuration Management server in order to operate."
- Text: "Specify the ZENworks Configuration Management server login information and click 'Login' to proceed."
- Label: "Server URL:" followed by a text input field containing "https://10.1.1.33".
- Label: "User Name:" followed by a text input field containing "Administrator".
- Label: "Password:" followed by a text input field with masked characters (dots).
- Buttons: "Login" and "Exit" at the bottom right.

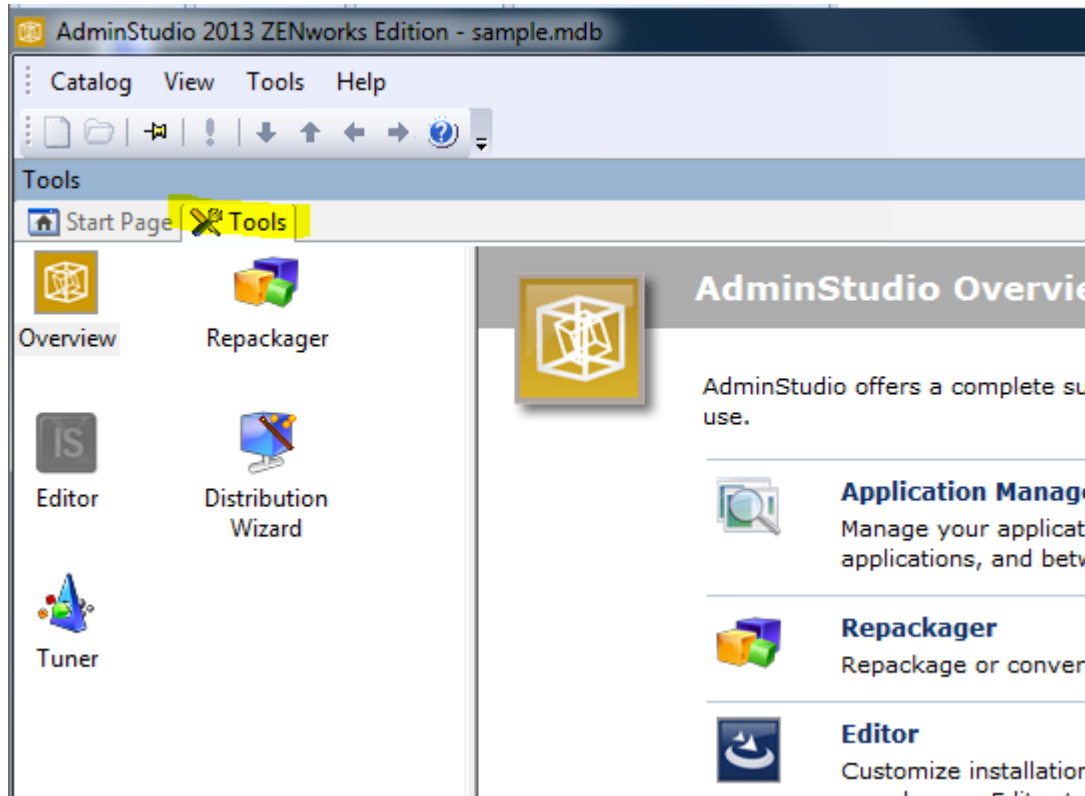




Novell.

paedML® 4.x

## 2. Arbeiten mit dem AdminStudio





Novell.

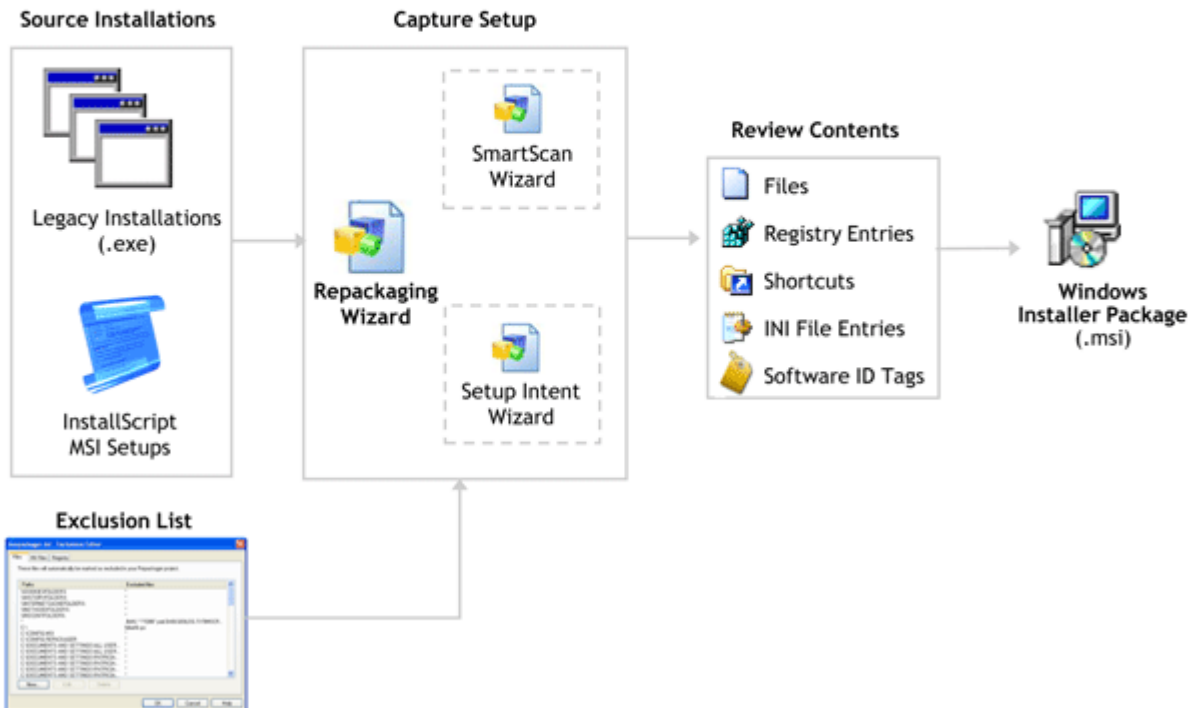
paedML® 4.x

## 2. Arbeiten mit dem AdminStudio



### Repackage Legacy Installations

The **Repackaging Wizard** is a tool for capturing legacy installations and creating a Repackager project file. You can then use the Repackager interface to exclude captured data and convert the project into a Windows Installer package. You can convert any type of installation including Microsoft SMS, Novell ZENworks, WinINSTALL, and Wise Installation projects, and even convert an InstallScript MSI setup to a basic MSI setup.

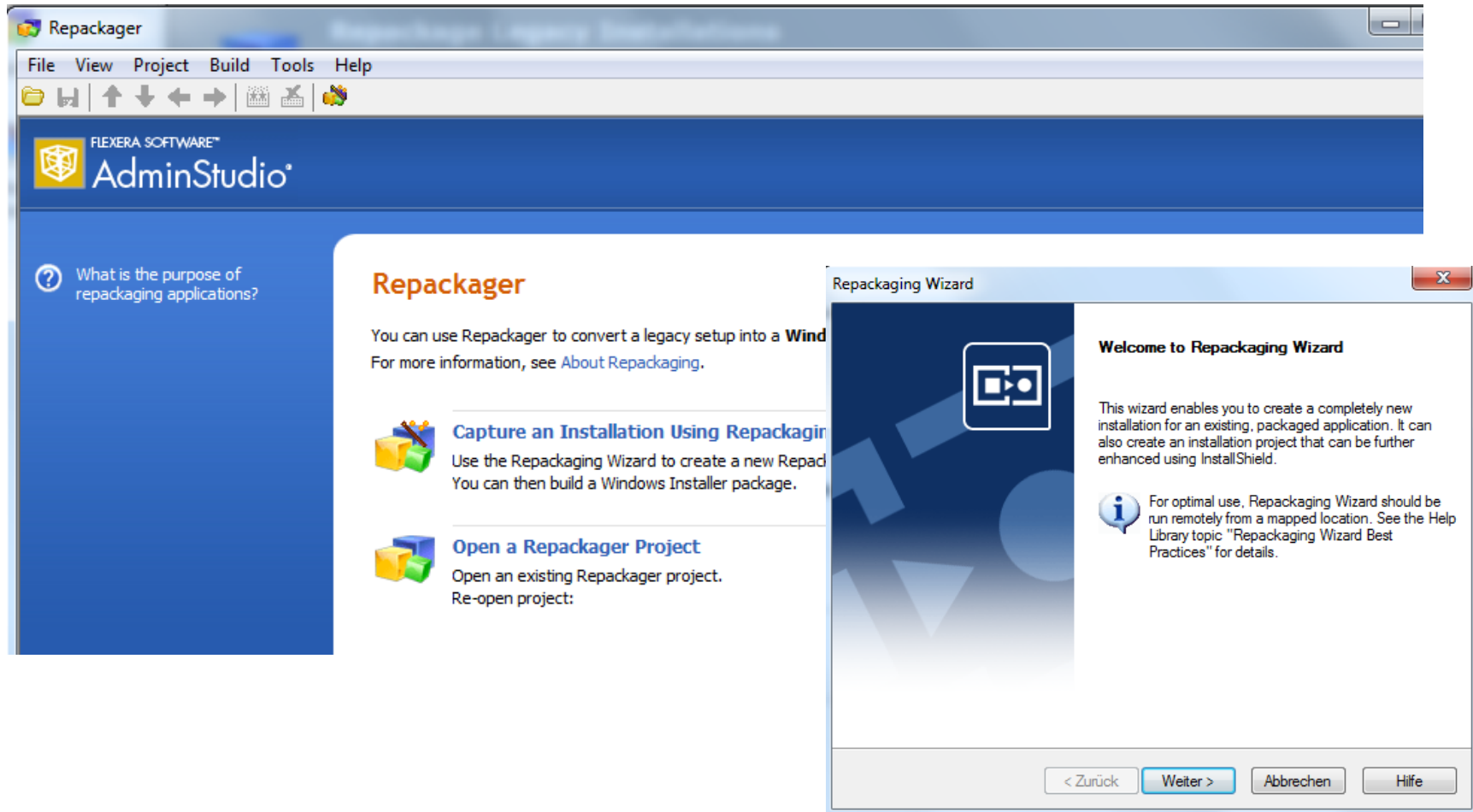




Novell.

paedML® 4.x

## 2. Arbeiten mit dem AdminStudio





## Wahl der Installationsmethode

Novell.

paedML® 4.x

**Repackaging Wizard**

**Method Selection**  
Select a repackaging method.

☒ **Installation Monitoring (Recommended)**  
Repackager watches lower-level system activities and records changes by the setup program(s). It then analyzes these activities and stores an output file which can be converted into a Windows Installer package.

☐ **Snapshot**  
Repackager takes an initial snapshot of the local system, runs the setup program, then takes a second snapshot. The difference between the two snapshots is then analyzed and stored in an output file which can be converted into a Windows Installer package.

The newly improved Install Monitoring method is the default method. It has the potential for cost savings through increased reliability and shorter installation times.

< Zurück   Weiter >   Abbrechen

**Repackaging Wizard**

**Collect Product Information**  
Provide product information for repackaging. Items with asterisks (\*) are required.

**Setup Programs**

Program File: \*  
Z:\AdminStudio\_Files\Software\stellarium-0.10.2.exe

Command-line Argument(s):  
[Edit Setup List](#)

**Product Information**

Product Name: \*   Version:  
Stellarium   1.0

Company Name: \*  
Hersteller   [More](#)

< Zurück   Weiter >   Abbrechen   Hilfe





## Ordner festlegen

Novell.  
paedML® 4.x

The screenshot shows a Windows-style dialog box titled "Repackaging Wizard". It has a standard title bar with a close button (X). The main content area is divided into sections. The first section is titled "Set Target Project Information and Capture Settings" with a subtitle "Provide the target project path and review capture settings." and a blue icon of two overlapping squares. Below this, there is a text box with the instruction: "Specify the location where Repackaging Wizard will store files created during system change analysis. The Repackaging Wizard output file (.inc) will be saved to this location." This is followed by a label "Project path to store files to:" and a text input field containing "Z:\AdminStudio\_Files\MSI". To the right of the input field is a blue button with three dots "...". Below the input field is a section titled "Review or edit the current settings" with a subtitle "Any changes made to these settings will apply to the current and future analysis." and an "Edit..." button. At the bottom of the dialog are four buttons: "< Zurück", "Start", "Abbrechen", and "Hilfe".

Repackaging Wizard

**Set Target Project Information and Capture Settings**  
Provide the target project path and review capture settings.

Specify the location where Repackaging Wizard will store files created during system change analysis. The Repackaging Wizard output file (.inc) will be saved to this location.

Project path to store files to:  
Z:\AdminStudio\_Files\MSI

Review or edit the current settings  
Any changes made to these settings will apply to the current and future analysis.

< Zurück Start Abbrechen Hilfe

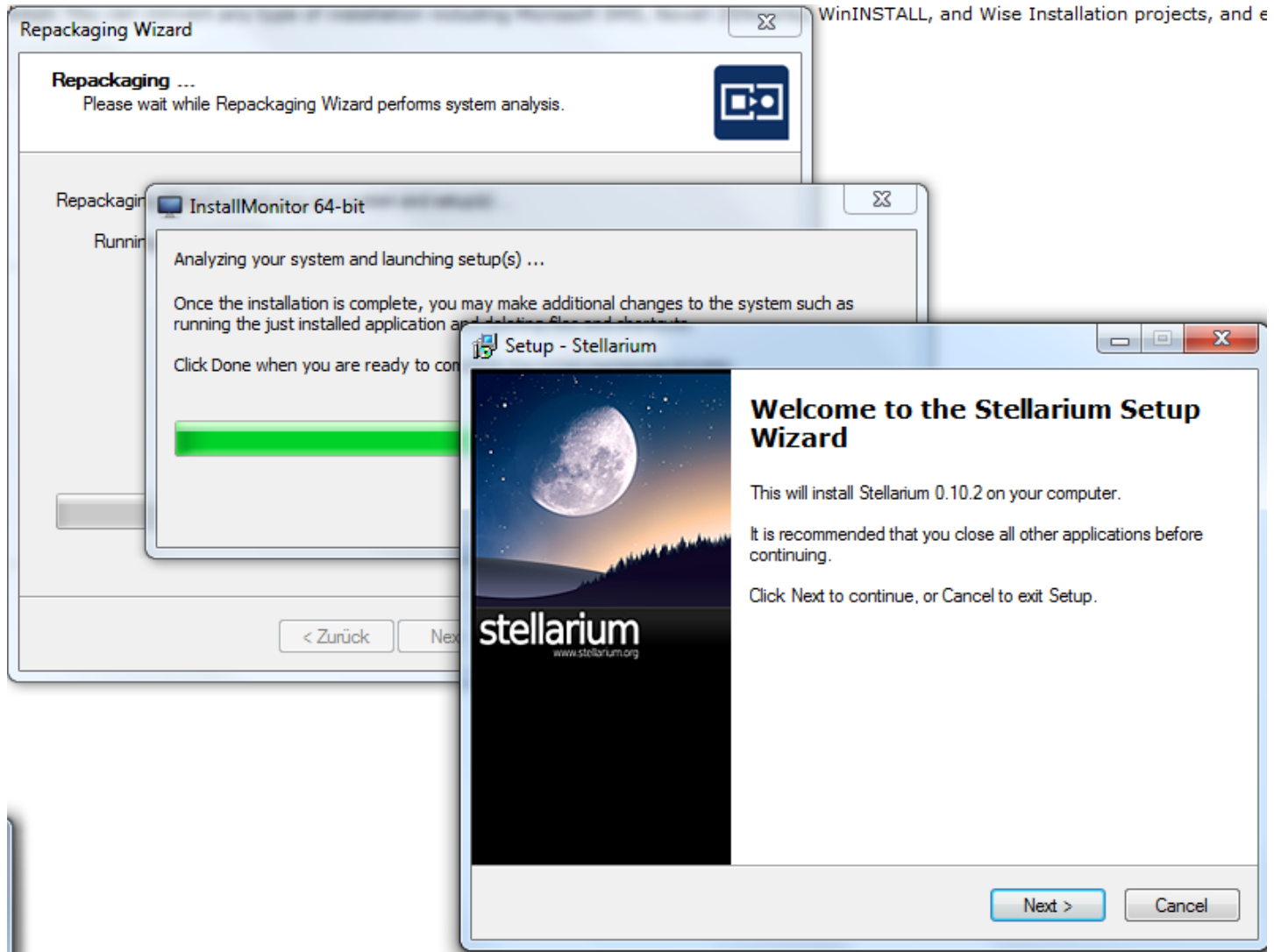






## Beginn der Programm-Installation

Novell.  
paedML® 4.x



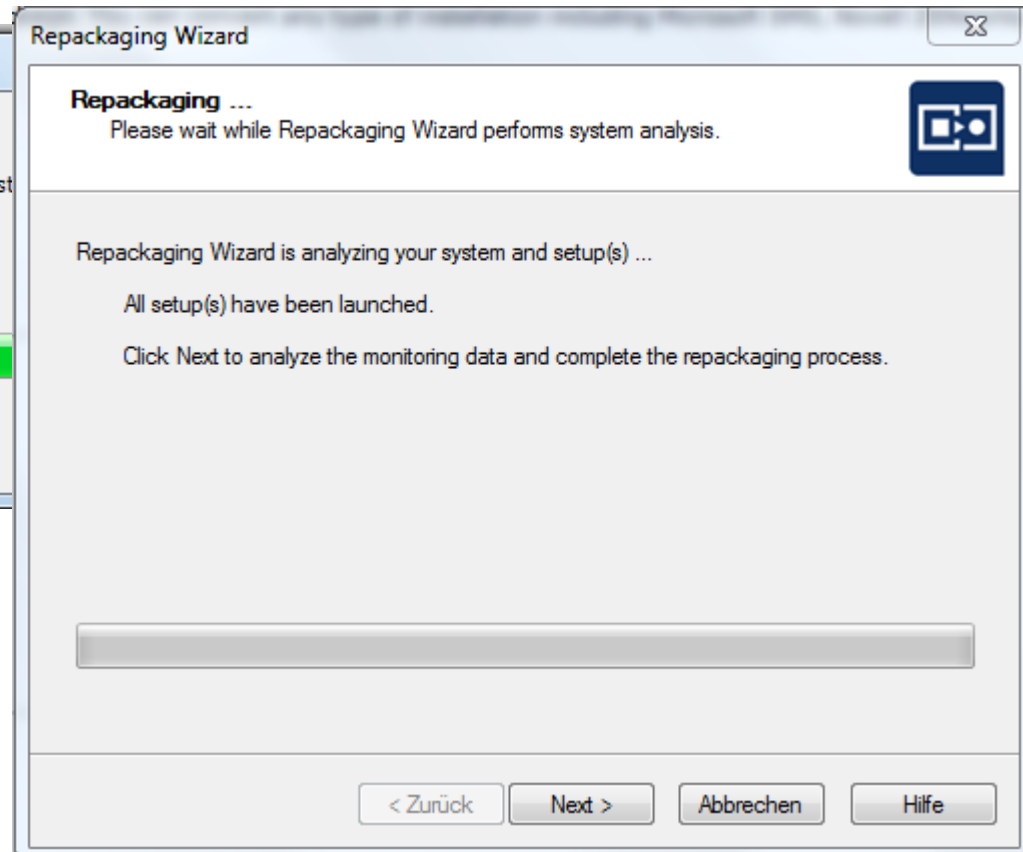
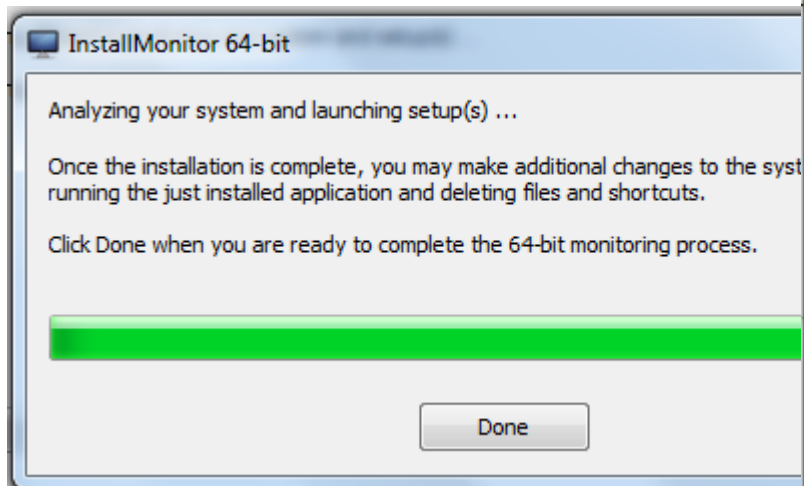


## Installation durchführen

Novell.

paedML® 4.x

Anpassungen am Programm machen.  
Danach auf Done klicken.



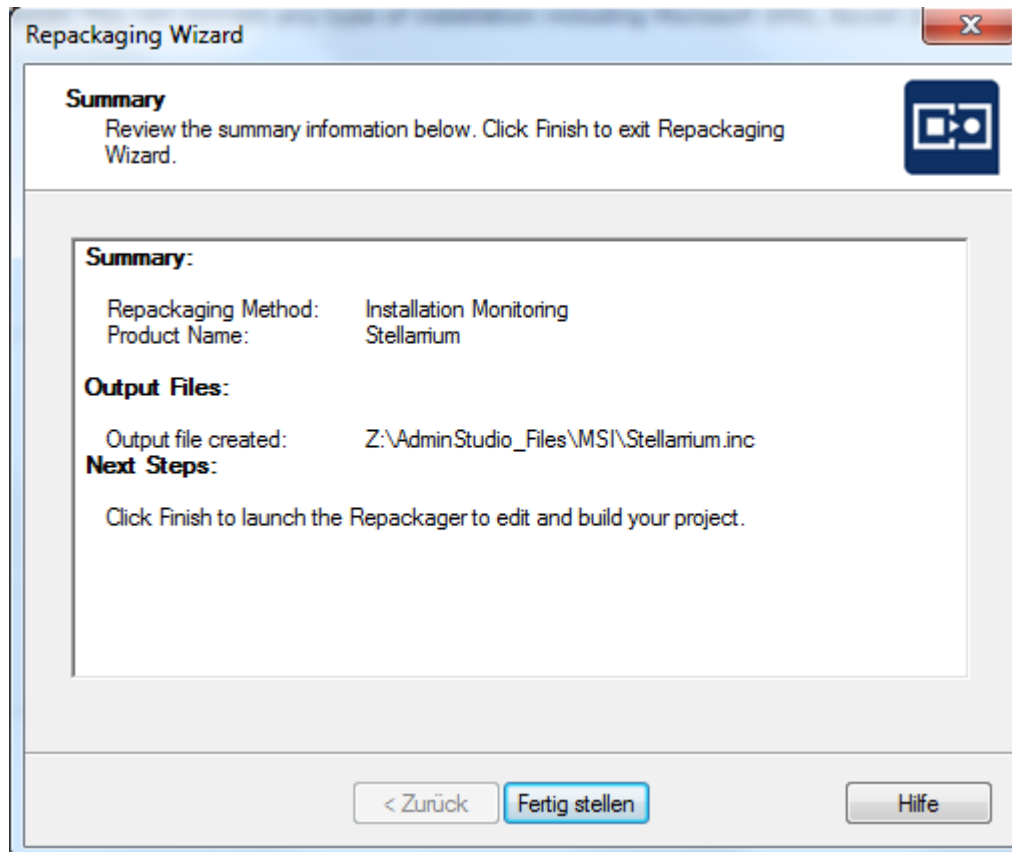
Danach läuft die Analyse





## Installation durchführen

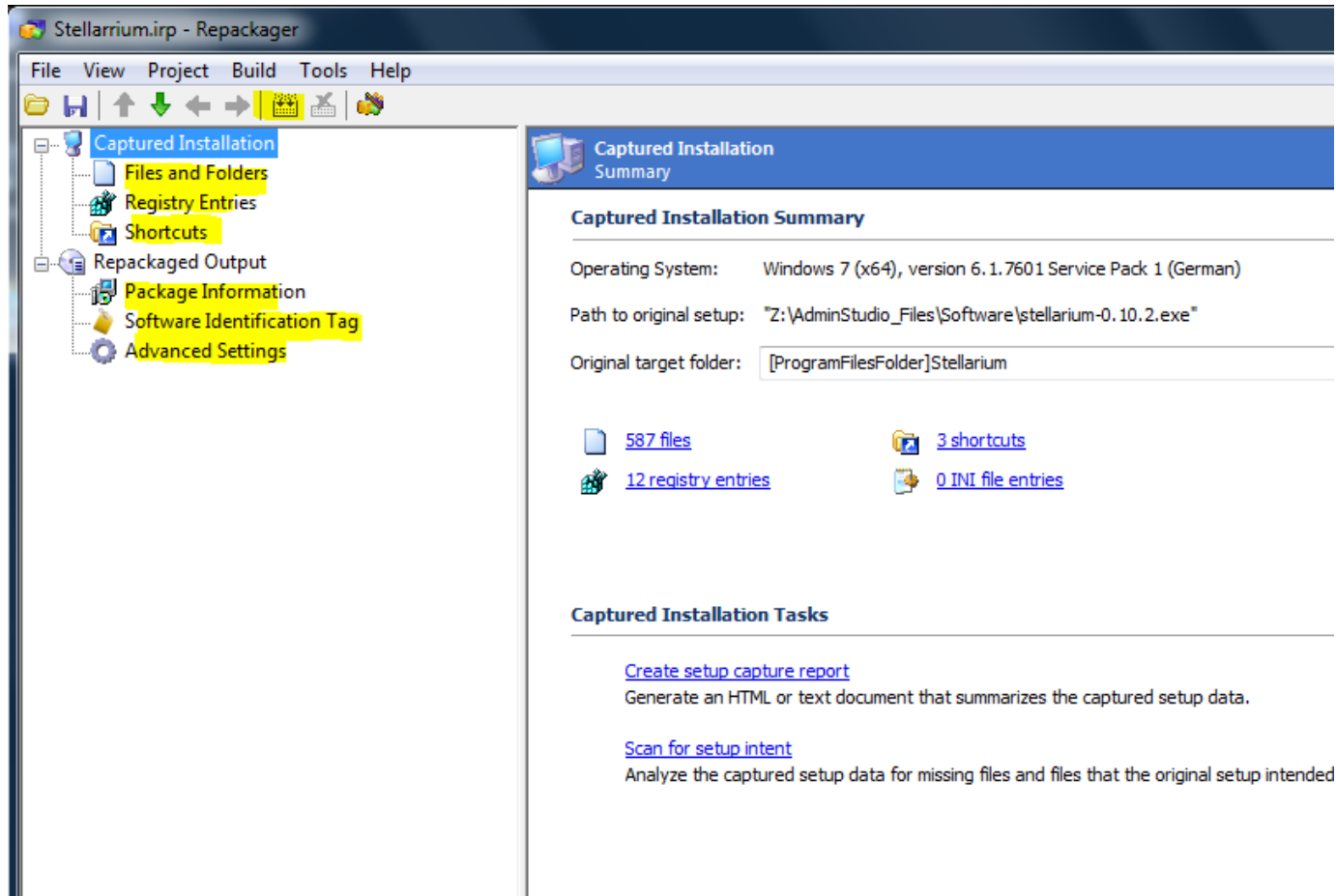
Novell.  
paedML® 4.x





## MSI-Paket erzeugen

Novell.  
paedML® 4.x



Einzelne Informationen überprüfen, ob nur relevante Informationen gespeichert wurden. Danach auf „built“ drücken.





## Paket testweise installieren

Novell.

paedML® 4.x

```
Adding Software Id tag 'Z:\AdminStudio_Files\MSI\regid.2009-06.com.flexerasoftware,AdminStudio_Stellarium 0.10.2__Stellarium_is1.swidtag'  
Finished successfully.
```

**Conversion complete.**

**Output file:** Z:\AdminStudio\_Files\MSI\MSI\_Package\Stellarrium.msi

Log file created: [Z:\AdminStudio\\_Files\MSI\Build Log.txt](#)

Ready

Danach liegt das Paket im MSI-Verzeichnis / Netzlaufwerk.

Mit dem Befehl

`msiexec /i Z:\AdminStudio\MSI\MSI_Package\Stellarium.msi /qb`

kann das erstellte Paket an einem Rechner getestet werden.

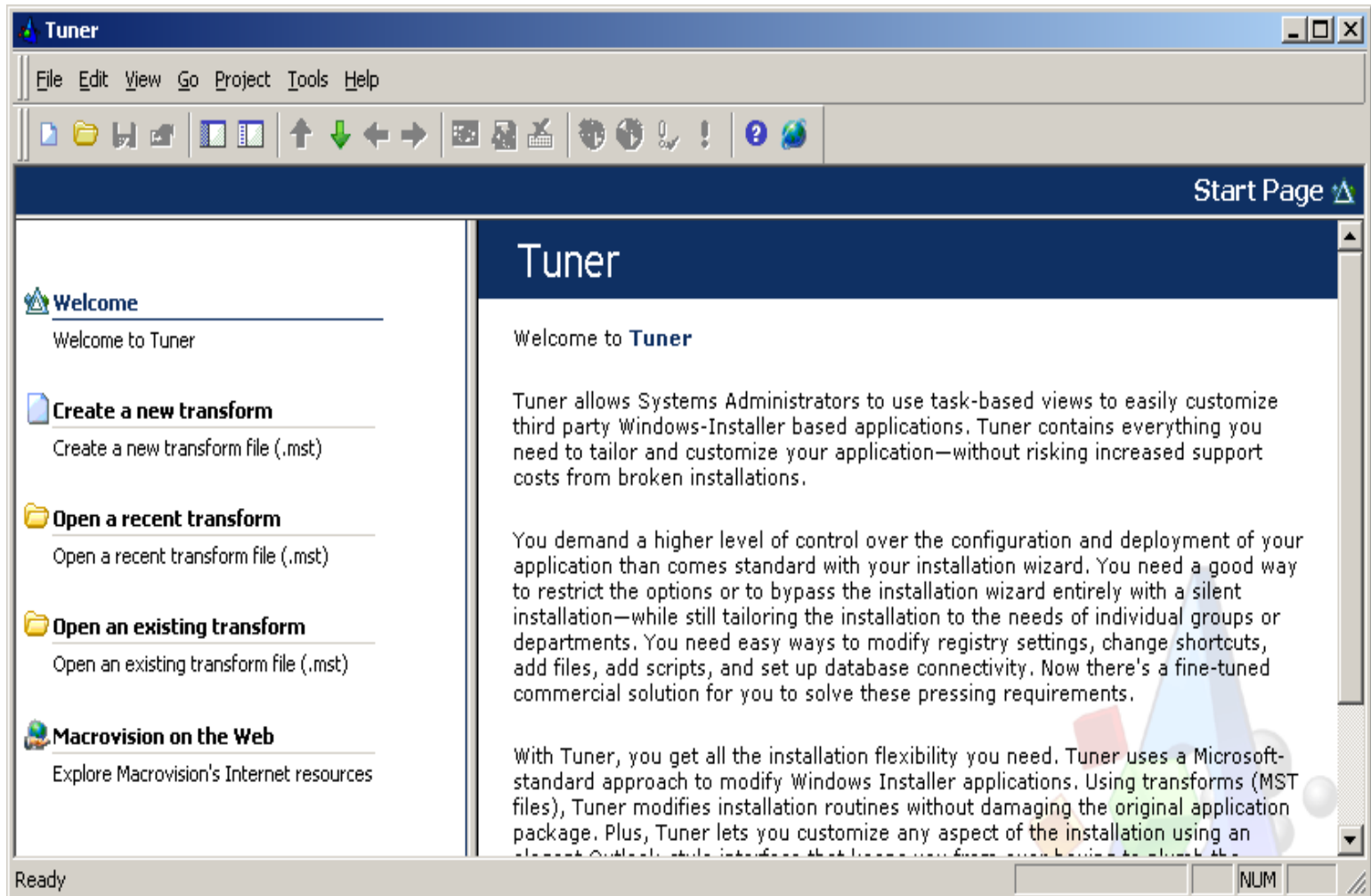
Pfad entsprechend anpassen!





## MST-Datei mit dem Tuner erstellen

Novell.  
paedML® 4.x





## Einstellungen festlegen

Novell.

paedML® 4.x

Base Windows Installer Package

Select an MSI file.

E:\Users\admin\Desktop\OpenOffice.msi Browse

Provide a list of additional transforms to be applied.

Windows Installer Transforms

Provide a new project name and location (or accept the Customization project).

E:\Users\admin\Desktop\OpenOffice.mst

☒ Response Transform

Command line properties (separated by ';') that will be while creating a response transform

Create

**OpenOffice.mst (OpenOffice.msi) - Tuner**

File Edit View Go Project Tools Help

Shortcuts

- Package Validation
  - Prevalidation
- Organization
  - Product Properties
  - Features
- System Configuration
  - Files and Folders
  - Registry
  - Shortcuts
  - INI Files
  - NT Services
  - ODBC Resources

Destination Computer

- ALLUSERSPROFILE
  - OpenOffice.org Impress
  - MATHE Programm**
  - OpenOffice.org Writer

Ready

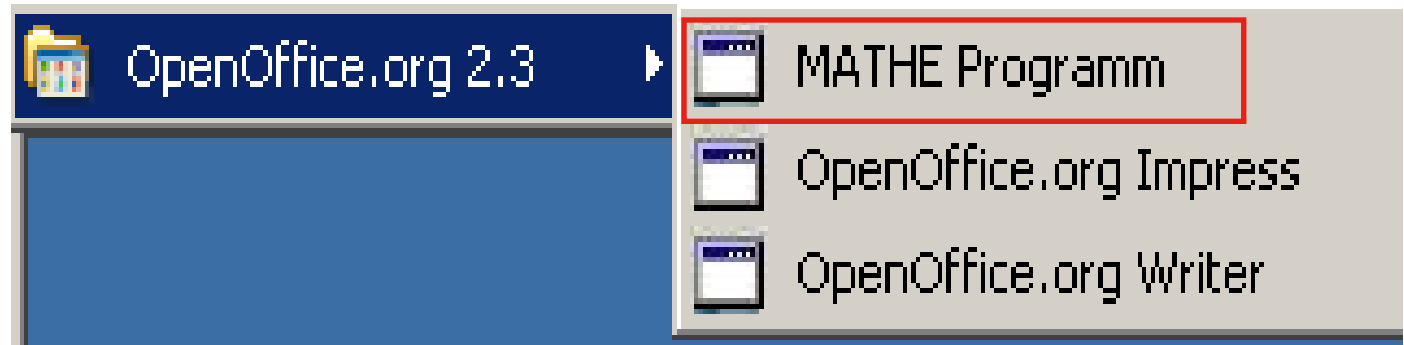
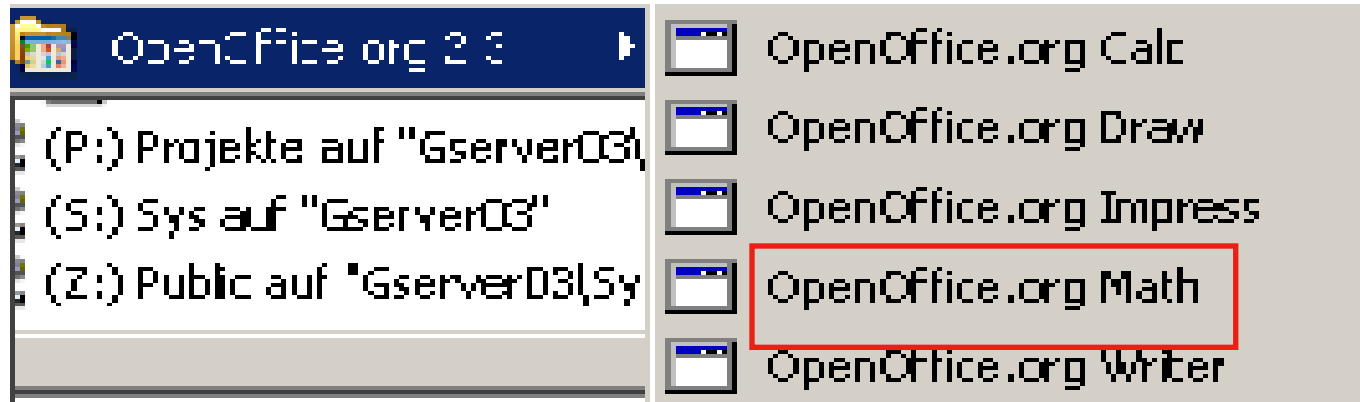




## Ergebnis der Installation - Änderungen

Novell.

paedML® 4.x







Eine sehr ausführliche Beschreibung finden Sie im BK-ML41, Kap. 7.11([bk41-07\\_softwareverteilung.pdf](#))

Erstellen Sie ein MSI-Paket für die OpenOffice-Installation

Als Installationsort legen Sie `K:\OpenOffice` fest  
(dies bedeutet eine serverbasierte Installation)

Erzeugen Sie anschließend ein neues Anwendungsobjekt und stellen Sie dieses den Benutzern im NAL zur Verfügung

„Tunen“ Sie das Paket, nehmen Sie einige Änderungen vor und erstellen Sie die MST-Datei!



- **Nov. 2008: M. Flogaus / A. Tonigold / Th. Geiger**
- **Überarbeitet und erweitert: Juli 2016: Kluge**
- **„1.“ hinzugefügt: Juli 2016: Kluge**